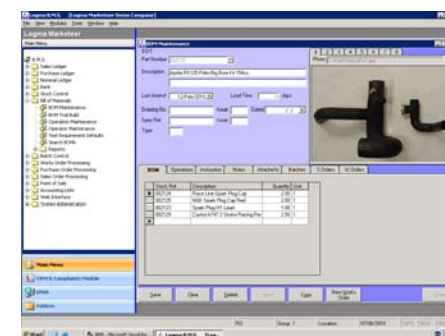


Benefits

- Meet delivery times
- Plan Production
- Traceability and Accreditation
- Quality Control
- Cost Reduction
- Streamline processes
- Integration with **LID** allows improved analysis



Manufacturing

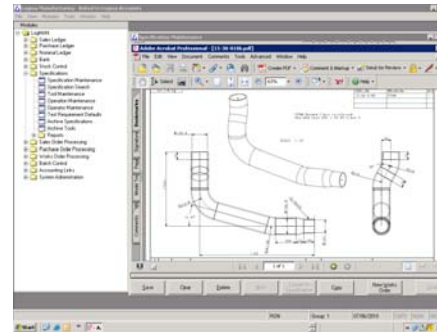
OneFit Manufacturing provides the essential elements of control for the manufacturing process. From detailed specifications and material requirements planning (MRP) through to completion of the finished product. Works order processing can be controlled via a back flush options or via the shop floor capture module.

Examples of Uses

- Maintain detailed inventory records
- BOM Specifications
- Batch tracking
- Traceability
- Multiple units of Measurement
- Labour costing at each operation point
- Attach drawings and instructions
- Trial Build and Costing
- Supplier Analysis
- Suggested Purchase Orders
- Suggested Works Orders

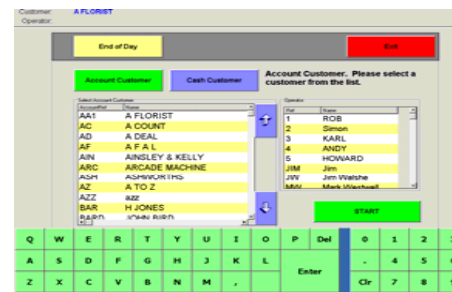
Works Orders

Works Orders can be generated automatically from sales orders and suggested orders or manually for individual specifications. Route cards, operation cards and picking lists can all be produced showing the order in varying levels of detail. The 'Backflush' option enables users to complete works orders by issuing stock retrospectively with single and multi-level options available.



Shop floor data capture - (optional)

Works orders can be traced through the factory via reliable touchscreen terminals. Each operator is presented with a list of their current jobs with access to detailed instructions and drawings when necessary.



Benefits

- Meet delivery times
- Control investment in stock
- Plan production
- Traceability and Accreditation
- Quality control
- Cost reduction
- Streamline processes
- Integration with LID allows improved analysis
- Control & Monitoring of Processes



Logma Systems Design Ltd
 Logic Centre, Cunliffe Street
 Chorley, Lancashire. PR7 2BA
 t: 01257 233123
 f: 01257 237215
 e: info@logma.co.uk

